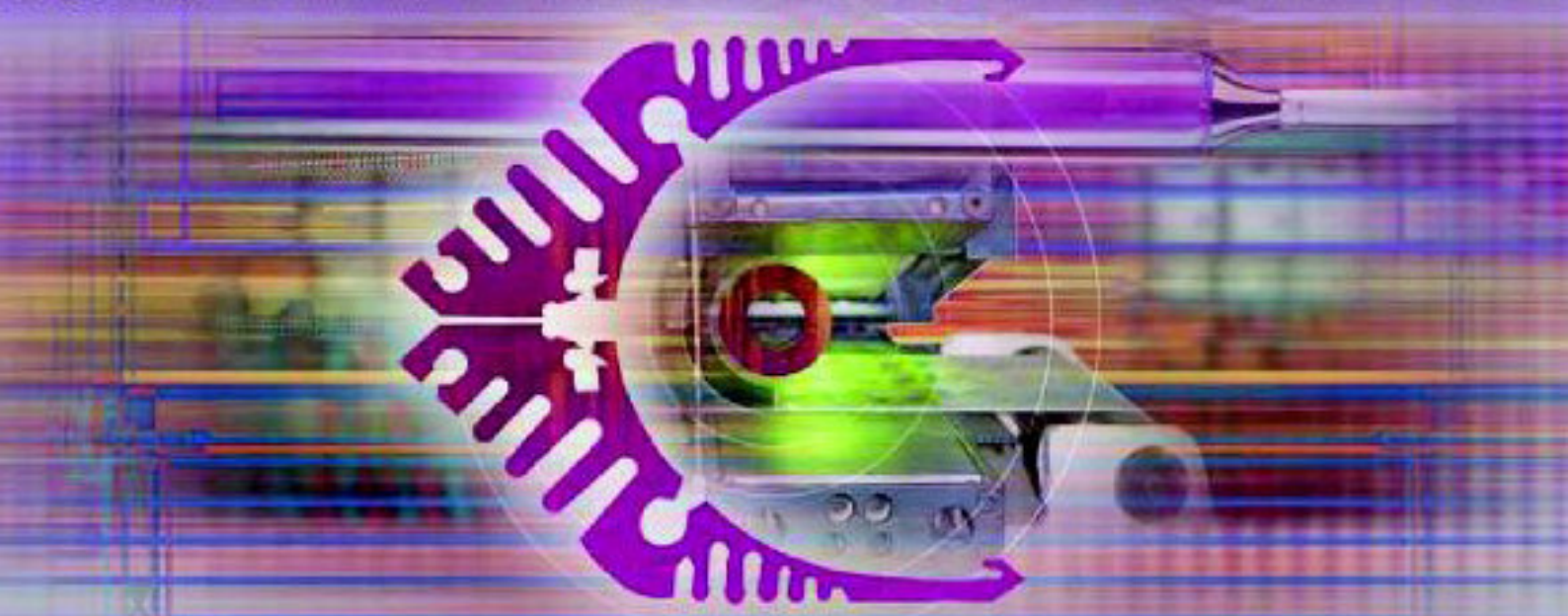


UV SYSTEM UV SYSTEM UV SYSTEM UV SYSTEM UV SYSTEM UV SYSTEM UV SYSTEM



UV SYSTEM UV SYSTEM UV SYSTEM UV SYSTEM UV SYSTEM UV SYSTEM UV SYSTEM

LABEL UV SYSTEM

LABELCURE

UV Curing System for Label Printing

General Features

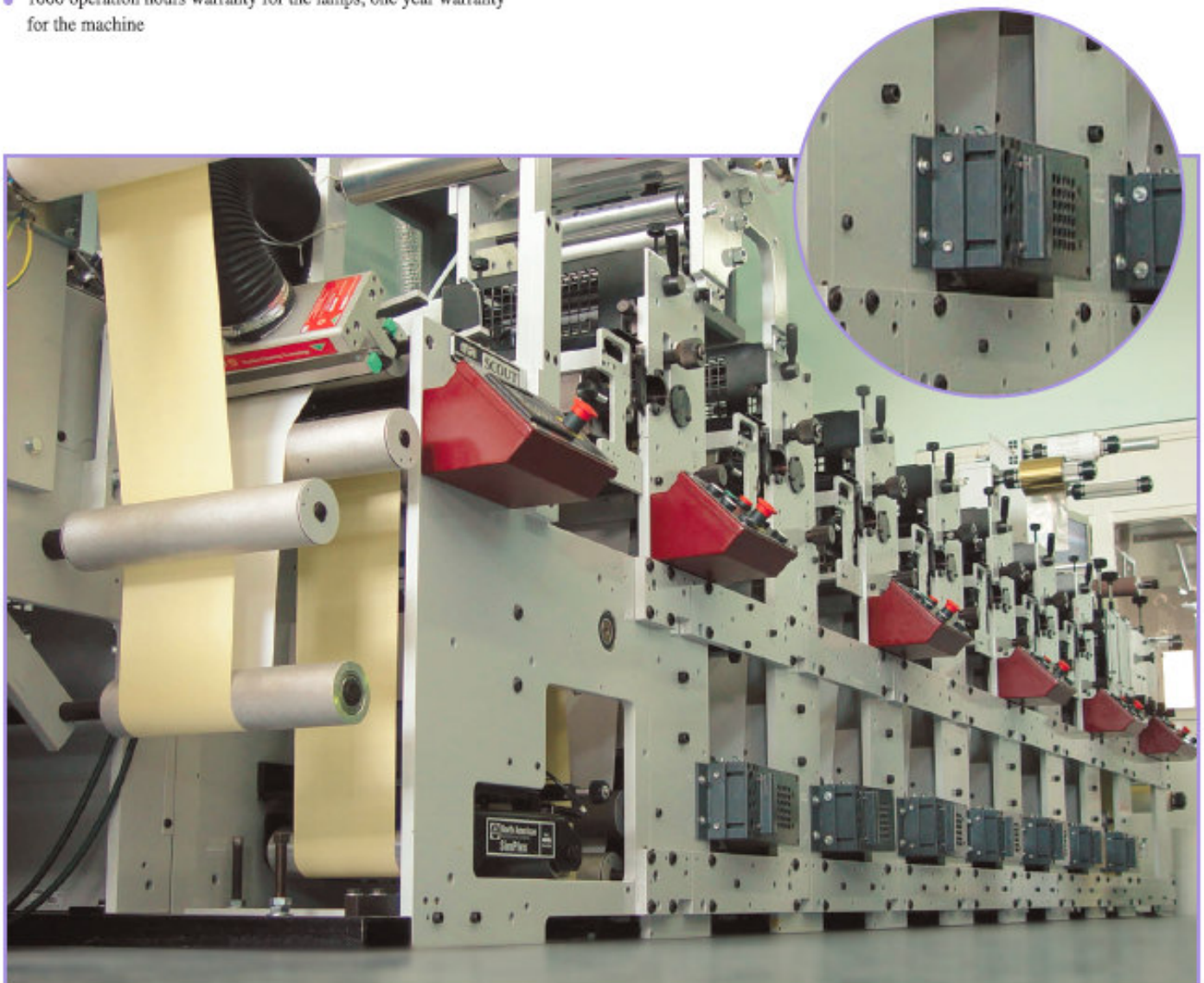
- Four models adaptable to various presses
- EMA patented aluminum reflectors with replaceable reflecting surfaces
- In case of any material flow failure, reflectors get closed to protect the cured material from IR heat effect.
- Pneumatic drive system for reflectors
- Extruded aluminum cabins (patented by EMA) located separately for each lamp
- Each lamp unit is cooled by an individual fan to keep the lamp temperature at a certain level for a long operating life.
- An individual electrical panel with wheels for easy maintenance and installation
- Start, stop and power level buttons, life counter and current indicators for each lamp
- Lamp power controlled in 3 levels
- Flow rate of each fan is controlled by a frequency controller according to the lamp power
- An emergency stop button on the control panel
- Electro-statically painted machine body to prevent scratching
- 1000 operation hours warranty for the lamps, one year warranty for the machine

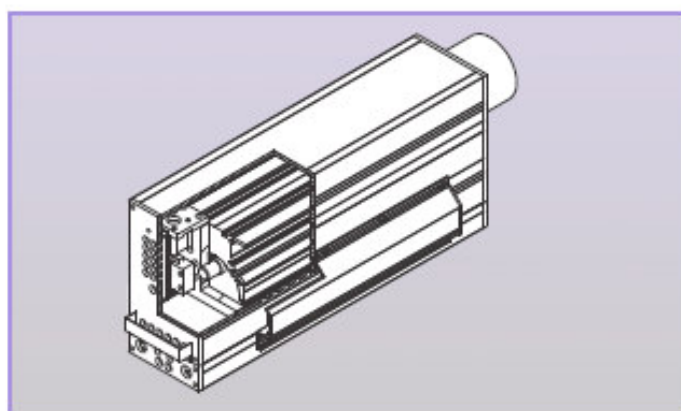
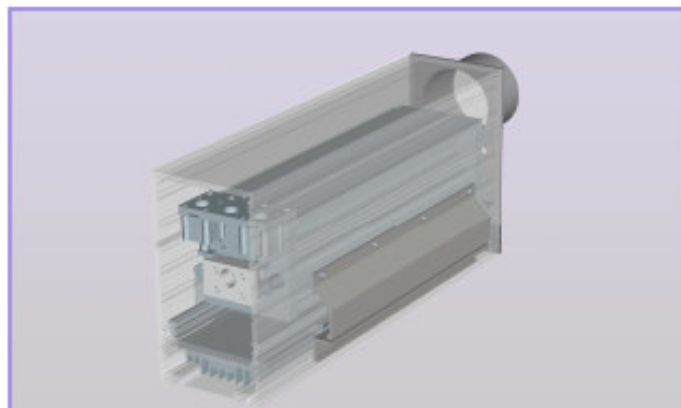
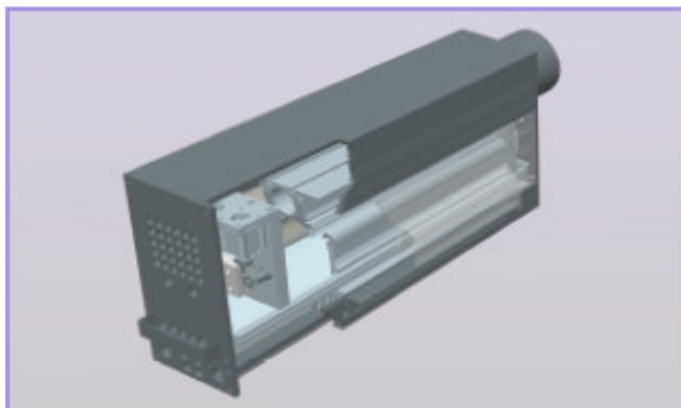
Technical Features

- 120, 160 or 190 W/cm powered medium pressure mercury UV lamps
- 380 Volt, 3 phases, 50 Hz power supply

Optional Features

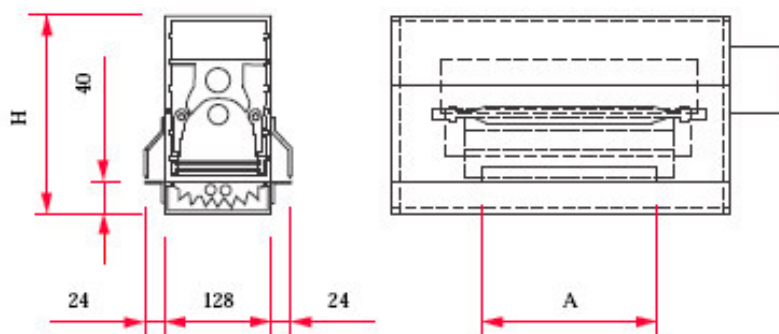
- Quartz panes as IR filters to protect the cured material from IR heat effect when curing plastic based materials (Available for EMA 105 and EMA 128 models)
- Special dichroic reflectors with a high IR absorbing capacity for transferring less IR heat to the cured material
- PLC, membrane switch and modem to enable user-friendly graphic interface and remote troubleshooting
- On PLC option, individual lamp power adjustment and control according to the material flow rate on each color station=
- Linear power control to enable any desired power level





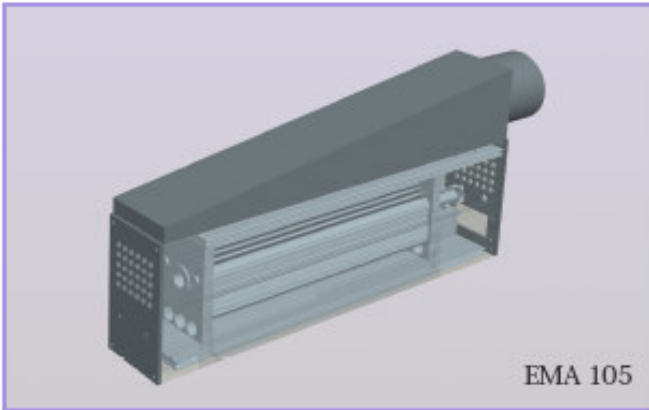
EMA Labelcure machines are designed for label printing presses. Labelcure machines are manufactured up to 500 mm curing width as standard and easily adapted to the presses with a compact design. EMA 128 model has 3 sub-models with different heights to reach the best cooling performance depending on the installation space.

	Height
	H (mm)
EMA 128 - L	210
EMA 128 - M	240
EMA 128 - H	270

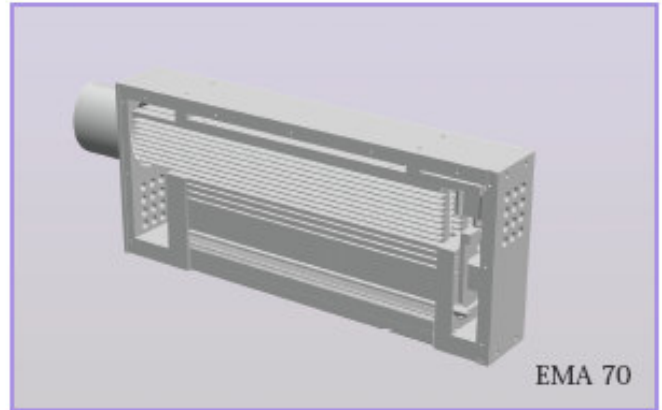


	Curing Width	Web Slot	Input Voltage	Maximum Air Pressure
	(mm)	A (mm)	(Volt)	(bar)
LC-150	100	160	380 - 415	6
LC-200	150	210		
LC-300	250	310		
LC-400	350	410		
LC-460	410	470		
LC-550	500	560		

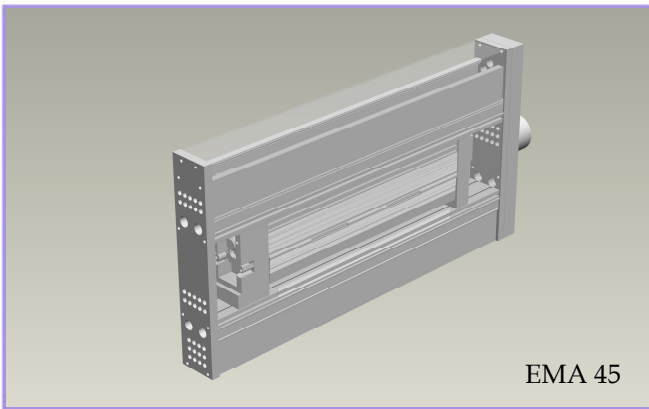
The permission to make any modification on the above information without any notification is held by EMA.



EMA 105

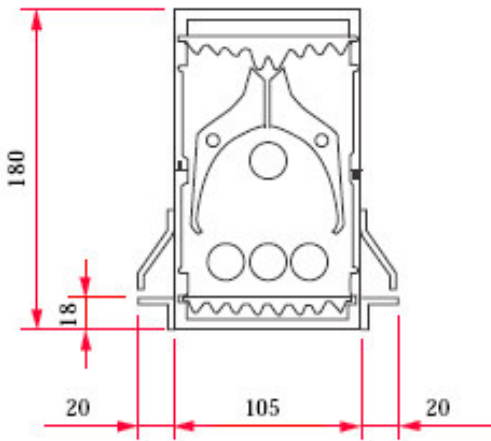


EMA 70

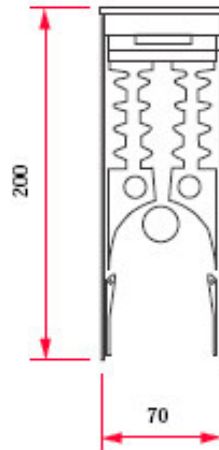


EMA 45

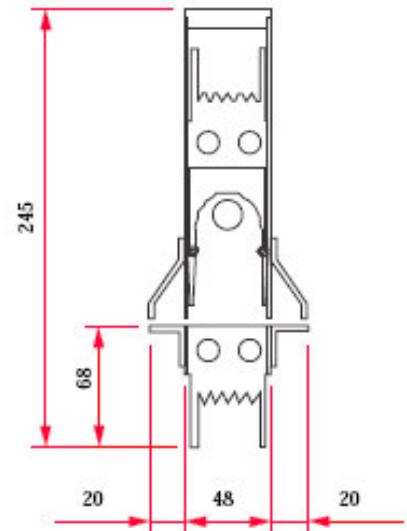
EMA Label Cure machine models are developed adequate to the installation spaces on different presses. EMA 105,70 and 45 models are designed for narrow spaces with compact designs.



EMA 105



EMA 70



EMA 45

	Curing Width	Web Slot	Input Voltage	Maximum Air Pressure	Models		
	(mm)	(mm)	(Volt)	(bar)	EMA 105	EMA 70	EMA 45
LC-150	100	160	380 - 415	6	√	√	√
LC-200	150	210			√	√	√
LC-300	250	310			√	√	√
LC-400	350	410			√		
LC-460	410	470			√		
LC-550	500	560			√		

The permission to make any modification on the above information without any notification is held by EMA.

